

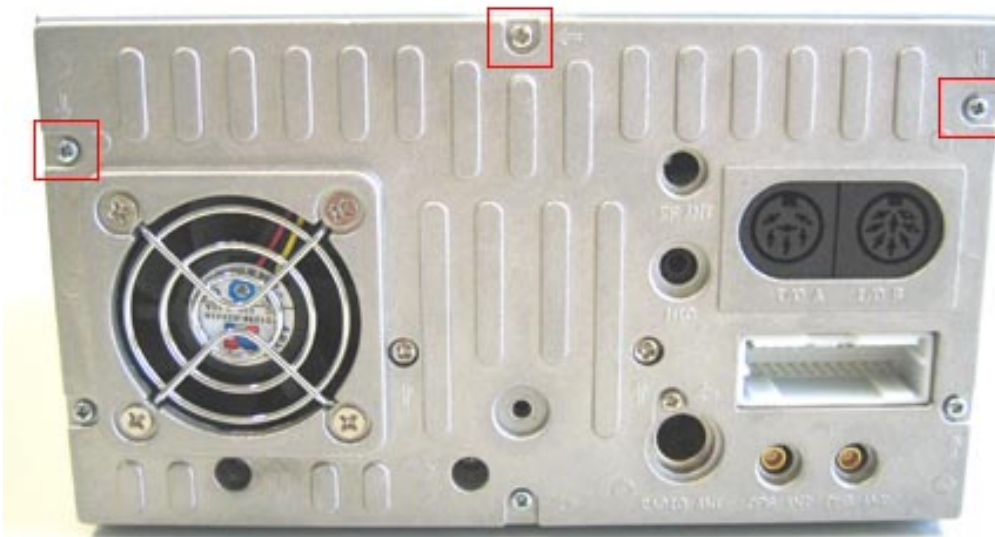
Assembling tutorial: Infill G4 double-DIN CarPC Barebone

The following components are used in this tutorial:

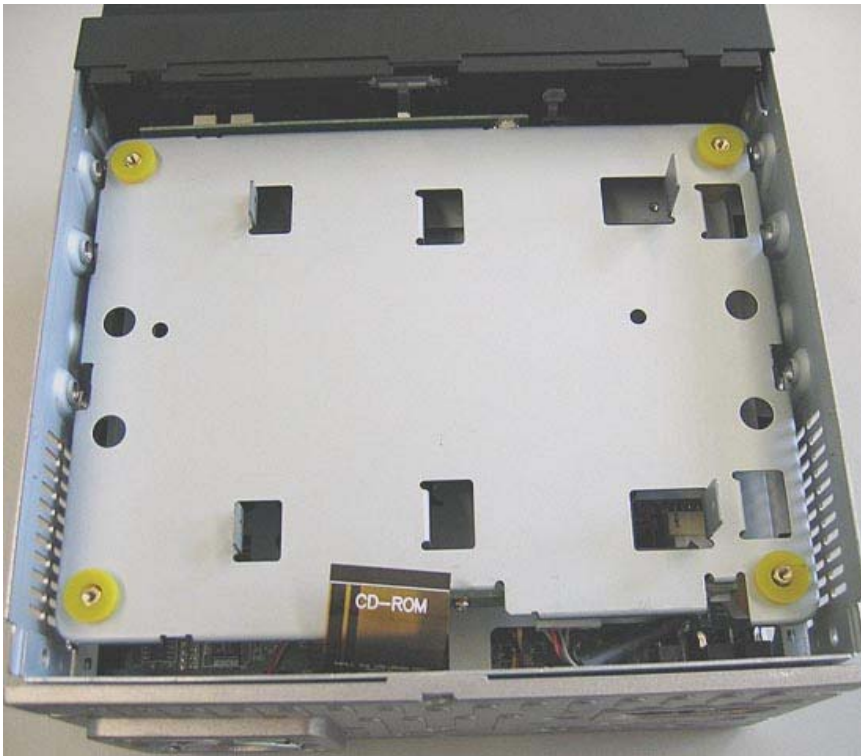
- 40 GB SATA HDD
- Slimline Slot-In DVD drive
- 512 DDR2 SO-RAM
- Infill G4 double-DIN CarPC



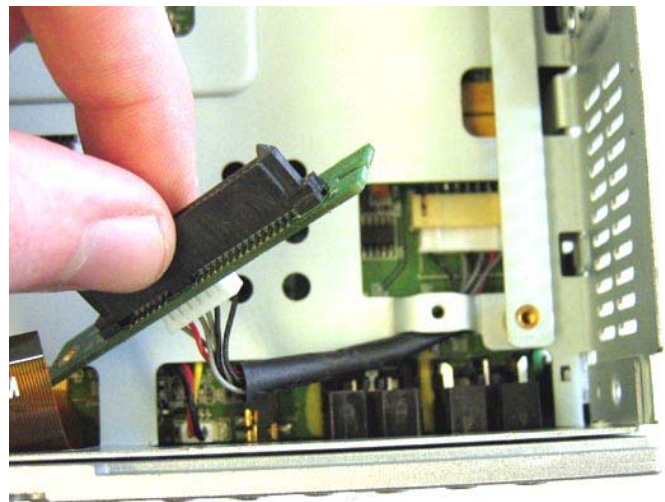
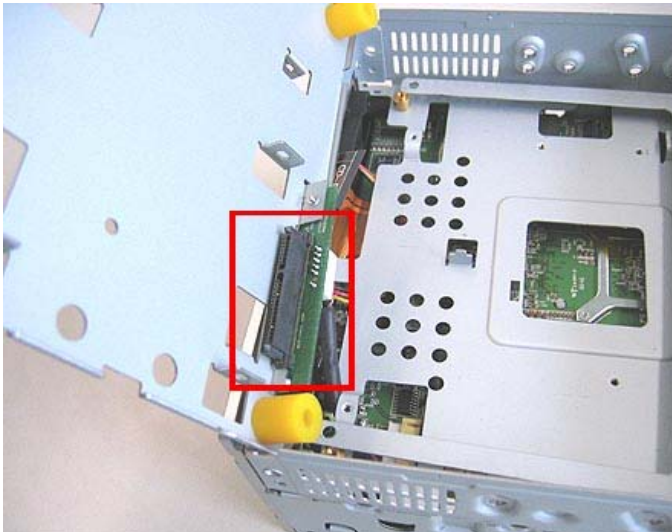
We start with the removing of the 3 red marked screws and taking off the cover of the enclosure:



The mounting unit (for CD/DVD drive and HDD) gets removed:



Then the long, golden spacers get removed.
The SATA adapter gets screwed of the rear of the mounting unit:



After that the CD/DVD drive gets installed onto the mounting unit and the included Slimline Adapter gets plugged at the rear of the CD/DVD drive:



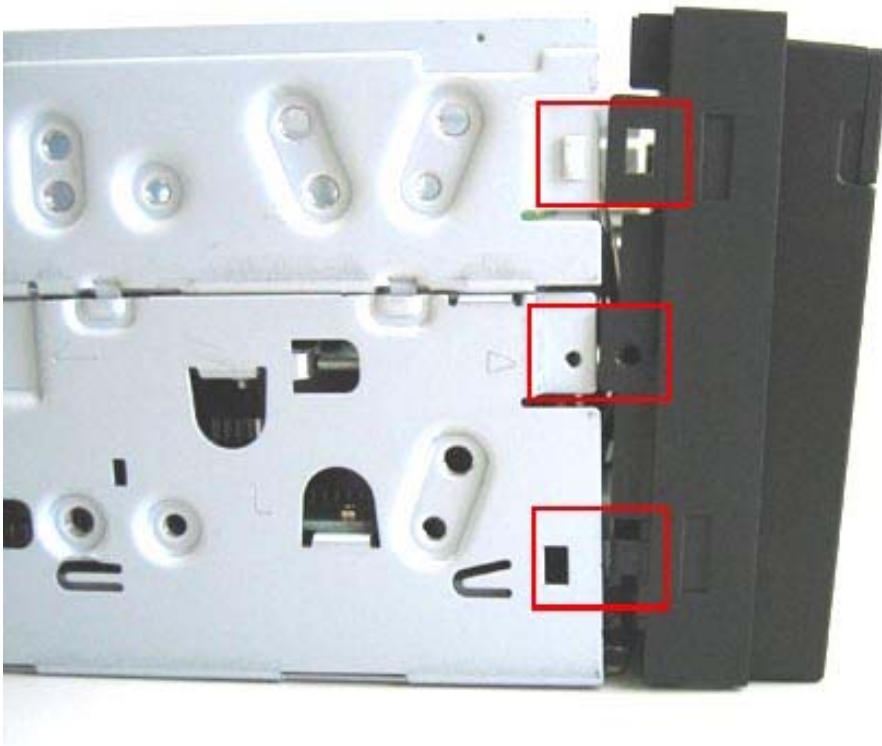
The 4 screws of the next layer get removed:



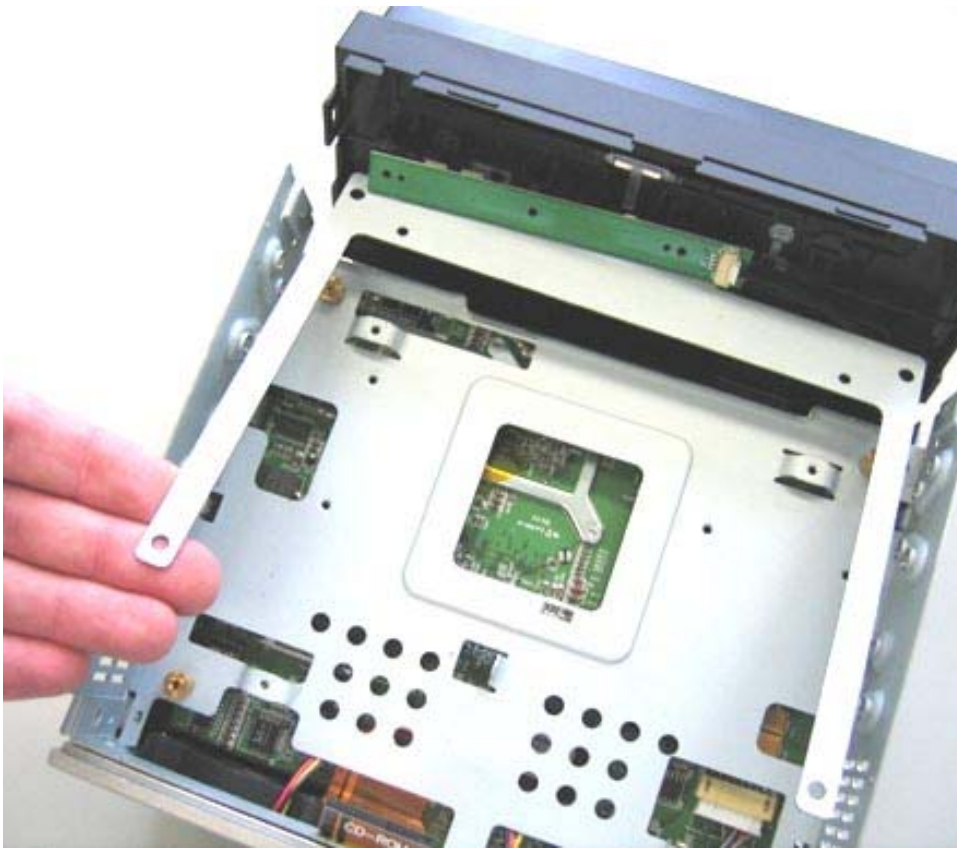
Remove the little circuit board:



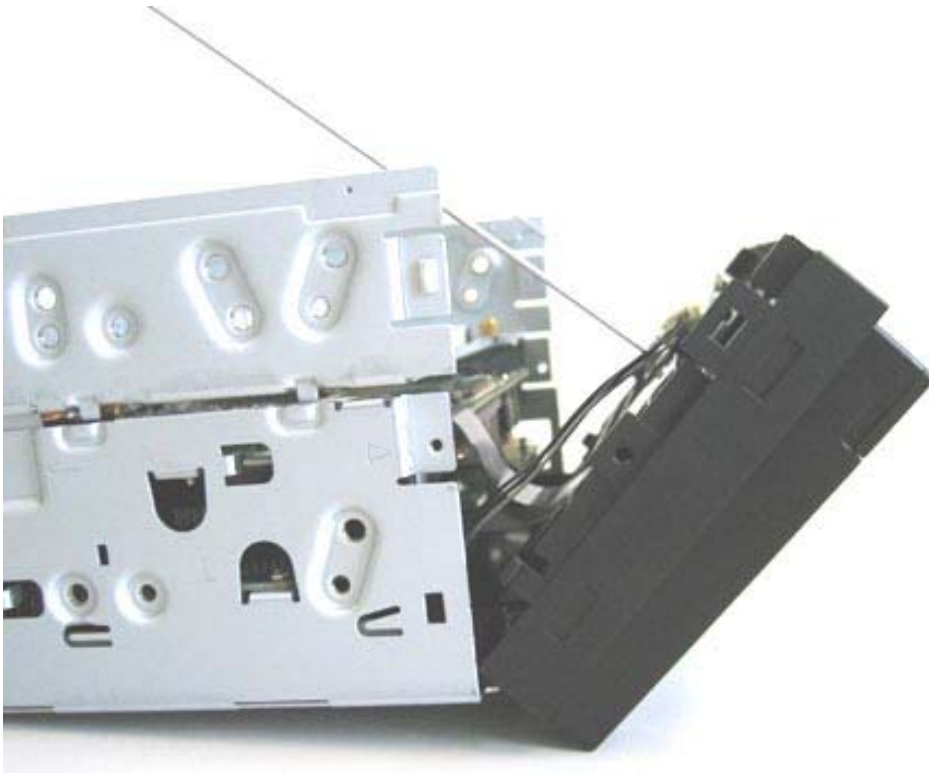
Remove the 2 screws at the sides (red quadrangle in the middle).
The 2 other red marked plastic clips have to be pushed in a little, so that you can turn the front forwards:



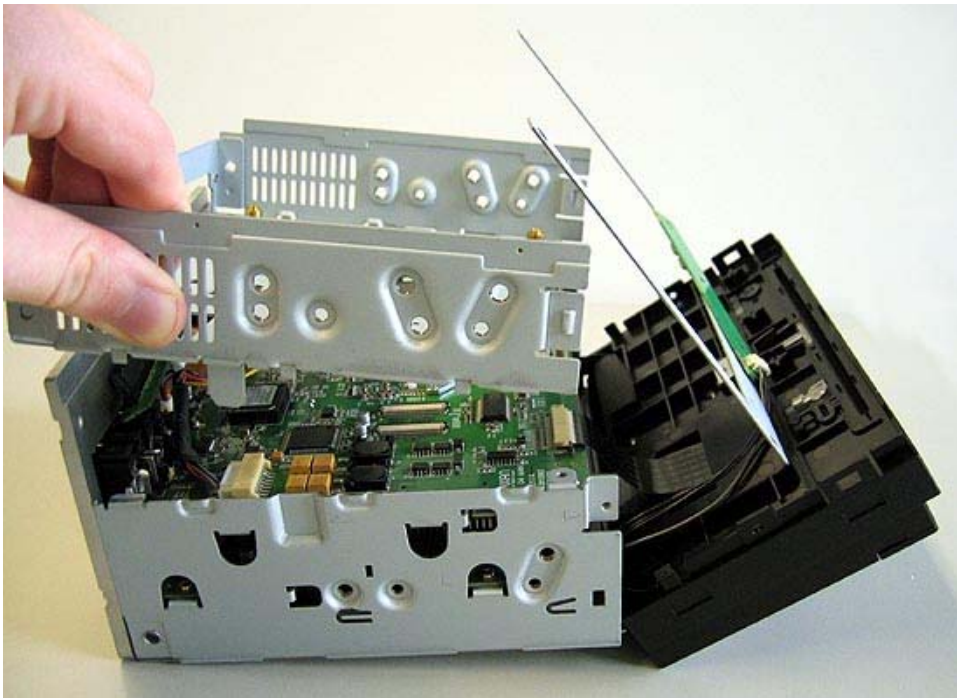
Remove the screws and bring up the device to turn the front forwards:



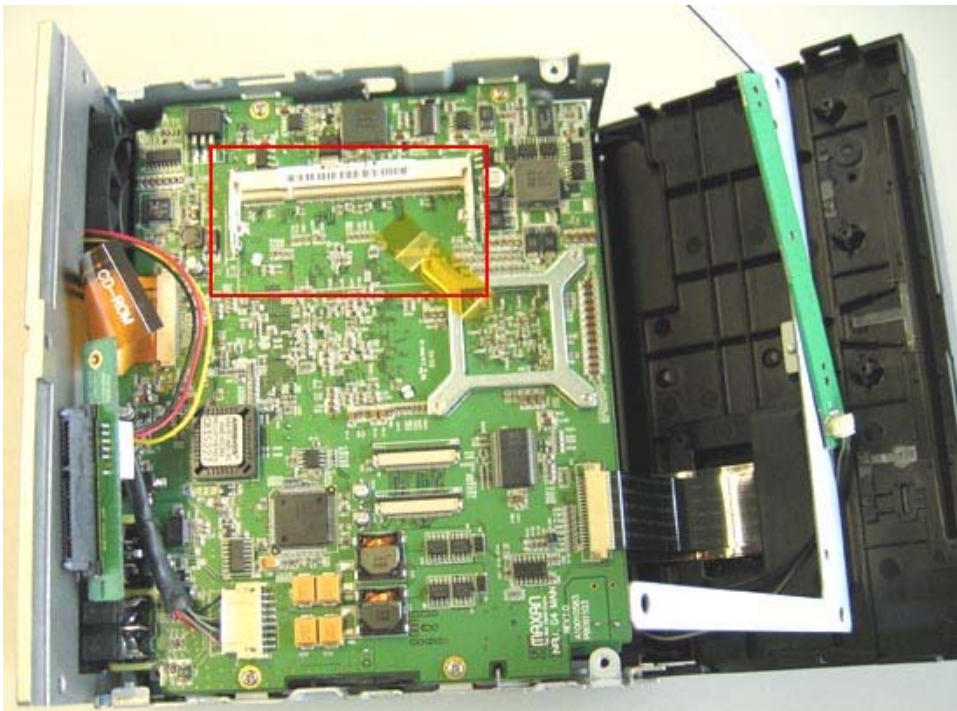
So it looks opened out:



Then you can remove the last part of the case:



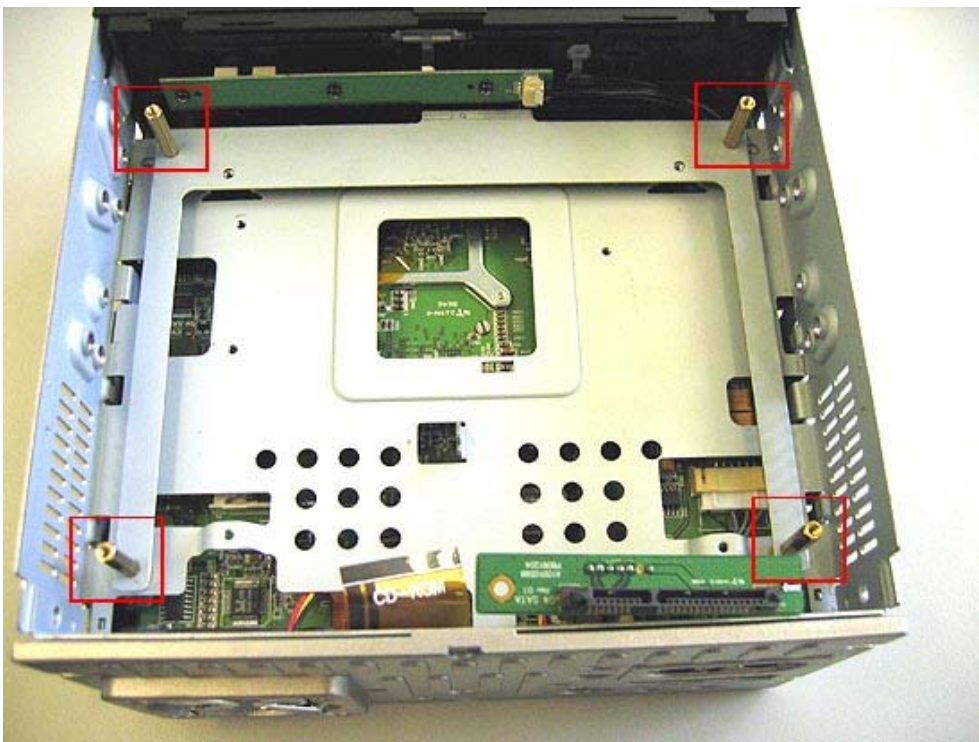
Now the RAM module gets installed:



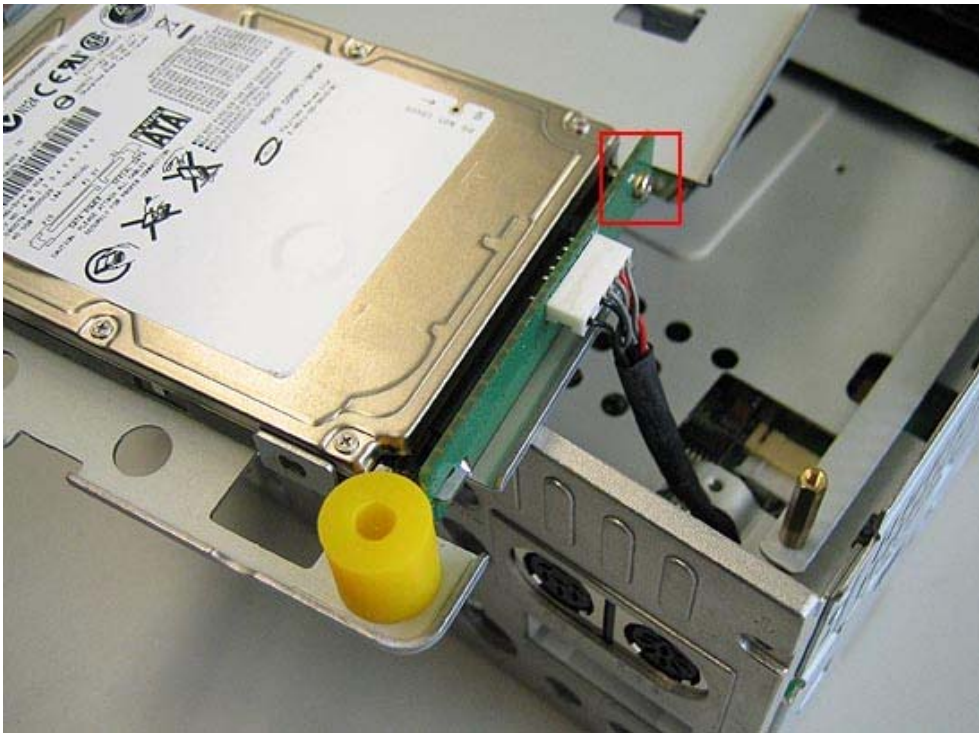
After that you can turn up the front again and take care, that all the clips are snapped into place. The little circuit board gets screwed on again.



The 4 spacers get screwed in again:



The SATA adapter gets screwed again at the mounting unit and then the HDD gets plugged into its place and gets fastened:



Now the ribbon cable gets connected to the DVD drive, the board gets screwed tight and the cover of the enclosure gets put-on and the barebone gets screwed on:



The PC-system is now assembled.



Author: B. Lambert - CarTFT.com e. K.
Last update: 14.06.2007